

## ELIGIBILITY CRITERIA AND REFERRAL PROCESS

### Eligibility Criteria:

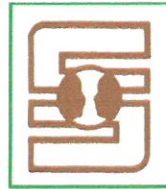
- ◆ The child is under 21 years of age, and
- ◆ The child has a mental health diagnosis, and
- ◆ The child is at risk for in-patient hospitalization or out of home placement, or
- ◆ The child is transitioning from in-patient hospitalization or out of home placement, and/or
- ◆ The child or family is involved with multiple systems.

**Geographic Area Served:**  
Family Based Mental Health provides services throughout Erie and Warren County.

**Referral Process:**  
A pre-certification form and medical necessity prescription letter is faxed or mailed.

The Family Based Mental Health supervisor at Corry Counseling Services can be reached at 814-664-7761 ext. 120 with any questions about the referral process.

Corry Counseling Services



Corry  
Counseling  
Services  
45 East Washington Street  
Corry, PA 16407  
Phone 814.664.7761  
Fax 814.664.4020  
www.cscccorry.org

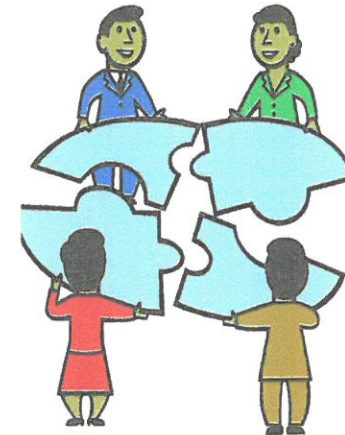
Corry Counseling Services is a non-profit organization dedicated to meeting the behavioral health needs of the residents of southeastern Erie County. The agency has served children and adults with mental and developmental disabilities in Corry and the surrounding area for nearly 40 years. In addition to Family Based Mental Health, programs and services include:

- Psychiatric evaluation and treatment
- Medication management
- Individual, family and group counseling for children, adolescents and adults
- Family Preservation Services
- Blended Case Management
- Medication Support Program
- Group home care for developmentally disabled adults

Services are professional, caring and confidential.

Other agency funding is provided in part by the Department of Public Welfare, the County of Erie Department of Human Services and the United Fund of Corry.

## FAMILY BASED MENTAL HEALTH PROGRAM OF CORY COUNSELING



# FAMILY BASED MENTAL HEALTH (FBMH)

## FBMH Service Components:

- Team delivered service
- Professional and confidential treatment
- Family, individual, sibling, and co-parent therapy sessions
- Strengths-based approach
- Case management
- Coordination/collaboration with other service providers
- Parent Education
- Respite assistance
- Crisis Stabilization
- Aftercare planning and service linkage
- 24 Hour/7 Day Support Line

## Client & Family Expectations:

- ◆ Meet consistently with the team as scheduled
- ◆ Keeping distractions and interruptions to a minimum ( eg. limit phone calls, TV turned off)
- ◆ Actively involved in treatment goal planning
- ◆ No physical aggression or verbal threats (mandated reporting)
- ◆ Availability to reschedule canceled sessions within the week

## About FBMH:

FBMH is an intensive in-home service that provides structural family therapy to children and their families who are experiencing serious emotional and behavioral issues and are at risk for in-patient hospitalization or residential placement. Therapy is a collaborative relationship between family members and the Family Based team. The primary goal of therapy is to empower and support family members so that positive changes may occur and children are not placed out of the home.

Teams regularly coordinate and collaborate with other service providers. This includes attending school meetings, medication checks, court hearings, and any other meetings that may require support for the family.

The Family Based teams undergo 3 years of training through the Philadelphia Child and Family Therapy Training Center, Inc. to further enhance their clinical skills and better serve the needs of families.



**Length of services:** FBMH services can be authorized for up to 8 months.

**Frequency of services:** Families are asked to commit to meeting with their assigned team a minimum of three times (or 3 hours) per week.

**Hours of operation:** FBMH staff work flexible hours, including evenings and weekends, in order to schedule sessions based on family need and availability.

**Location of services:** Sessions are held in the home, school, and community as needed.