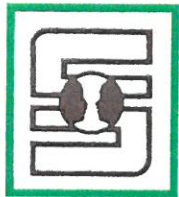


ELIGIBILITY CRITERIA AND REFERRAL PROCESS

Eligibility Criteria: Individuals must be at least 18 years old, have a diagnosis of a serious emotional illness and be prescribed psychotropic medication.

Geographic Area Served: At this time, the Medication Support Program is available only to Erie County residents.

Referral Process: The treatment provider is asked to complete a brief referral form. This form may be obtained by calling 664-7761 ext. 110.



The mission of Corry Counseling Services is to provide professional, caring and confidential services to individuals and families in need of mental health and residential services in Corry and the surrounding area.

CORRY COUNSELING SERVICES

Corry Counseling Services is a non-profit organization dedicated to meeting the behavioral health needs of the residents of southeastern Erie County. The agency has served children and adults with mental and developmental disabilities in Corry and the surrounding area for nearly 40 years. Programs and services include:

- Psychiatric evaluation and treatment
- Medication management
- Individual, family and group counseling for children, adolescents and adults
- Family Based Mental Health
- Family Preservation Services
- Behavioral Health Rehabilitation Services
- Blended Case Management
- Group home care for developmentally disabled adults

Services are professional, caring and confidential.

Funding is provided in part by the Department of Public Welfare, the County of Erie Department of Human Services and the United Fund of Corry.

For more information about programs and services, visit our website at:

www.cscconry.org

MEDICATION SUPPORT PROGRAM



Corry
Counseling
Services

45 East Washington Street
Corry, PA 16407
Pone 814.664.7761
Fax 814.664.4020
www.cscconry.org

MEDICATION SUPPORT PROGRAM at CORRY COUNSELING SERVICES

PROGRAM GOALS

The goal of the Medication Support Program is to assist clients to achieve recovery by offering support in effectively managing medication, education regarding emotional illness and the role of medication, and skill-building to increase self-sufficiency.

The program offers a high level of support with in-home services, flexible service hours and on-call availability 24 hours a day.

Services begin with an assessment of client need and the development of an individual treatment plan. The level of staff support is based on the needs and preferences of the individual client. Daily home visits may be made, although more typical are weekly visits with phone contacts between visits.

MEDICATION SUPPORT PROGRAM COMPONENTS:

Medication monitoring

Education

Skill building

SKILL AND COMPETENCY DEVELOPMENT

- Proper handling and safe storage of medications
- Accurate packing of a medication box
- Medication names, dosages, routes and times to be taken
- Purpose and possible side effects of prescribed medication
- How to read prescription labels
- Anticipating the need for prescription refills
- Ordering and obtaining refills of medications from a pharmacy in a timely manner
- Communicating and addressing concerns with providers
- Disposing of discontinued medication

Length of services:

The typical length of services is 12 to 18 months.

Frequency of services:

This varies depend on individual client need and the level of services.

Hours of operation:

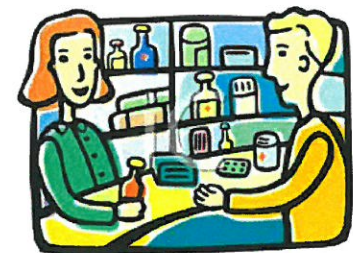
Medication Support Program staff work flexible hours in order to schedule sessions based on family need and availability. This includes evening and weekend hours.

Location of services:

Services take place in the client's home.

On-call availability:

The program offers on-call availability 24 hours a day.



Recovery
Recovery